

Aquatic Vegetation Assessment

# Prescribing a Management Plan



**PLM**  
LAKE & LAND  
MANAGEMENT CORP

## AQUATIC PLANTS

In moderation, aquatic plants provide many benefits to aquatic systems by producing oxygen, providing habitat for fish and other aquatic organisms, stabilizing bottom sediments and reducing shoreline erosion.

Problems exist when aquatic plants become too dense and create ecological and recreational issues. Excessive plant growth can impede biological interactions, reduce water quality and have impacts on residential property values.



## ASSESSMENT

A number of factors can contribute to excessive aquatic plant growth. In most cases, several factors have combined to create the problem. Although excessive nutrients can impact aquatic plants and algae growth, the introduction of exotic plant species is responsible for the majority of aquatic plant issues.

Exotic aquatic plants are plant species that are not originally from this region. Once introduced to a waterbody they can quickly dominate a system. They have few natural controls and often crowd out native plant species, interrupt biological interactions and negatively affect water quality.

To determine what factors are contributing to excessive plant growth, a vegetation survey is recommended to assess the types, density and distribution of vegetation in the water body. This survey allows us to establish a Management Plan and track the results of management efforts.

It is also recommended to assess the water quality characteristics, as this will give us a baseline of nutrient levels, water clarity, dissolved oxygen and other parameters that can be assessed throughout the Management Program.



### MICHIGAN LOCATIONS



**Alto Location**  
8865 100th St. SE  
Alto, MI 49302-9221

**Morrice Location**  
10785 Bennett Dr.  
Morrice, MI 48857-8760

**Evart Location**  
9826 S Industrial Drive  
Evart, MI 49631

**Sturgis Location**  
1169 N Nottawa St.  
Sturgis, MI 49091

Phone (616) 891-1294

Fax (616) 891-0371

Toll-free (800) 382-4434

PLMcorp.net

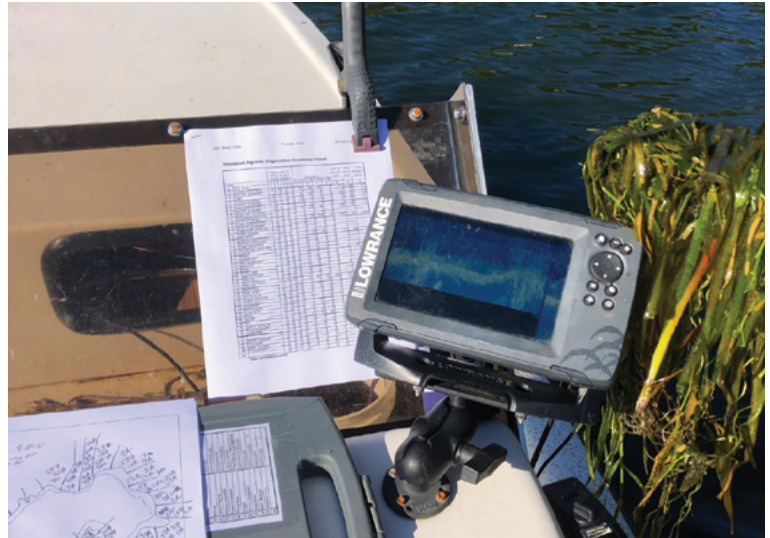
# PRESCRIBING & IMPLEMENTING A MANAGEMENT PLAN

Once the causes of the aquatic plant issues can be determined, a Management Plan can be developed to address the specific issues. Whether it is an exotic species, excessive native plant growth or other factors, we can prescribe a plan best suited for your water body's needs. Several options are available for aquatic vegetation management, and based on the goals of the program, the most appropriate options will be presented.



# EVALUATION

By evaluating the success of the Management Program through repeated aquatic vegetation surveys, water quality assessment and stakeholder feedback, we can then determine if adjustments to the Plan are required.



# HOW TO GET STARTED

To find out more about an assessment of your water body, give us a call or contact our website for the location closest to you. In most cases we can provide an informal meeting and quick assessment at your location free of charge. Complete vegetation surveys and water quality sampling charges are based on the size or specific requirements of your water body.

Don't wait for the impacts to your water body and property value to be irreversible. Contact us for an assessment to start making improvements now. You will be happy you did.



## MICHIGAN LOCATIONS

**Alto Location**  
8865 100th St. SE  
Alto, MI 49302-9221

**Morrice Location**  
10785 Bennett Dr.  
Morrice, MI 48857-8760

**Evart Location**  
9826 S Industrial Drive  
Evart, MI 49631

**Sturgis Location**  
1169 N Nottawa St.  
Sturgis, MI 49091

Phone (616) 891-1294

Fax (616) 891-0371

Toll-free (800) 382-4434

